

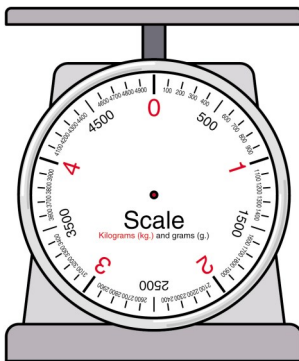
MATHS

Help George make his medicine by choosing the correct ingredients.

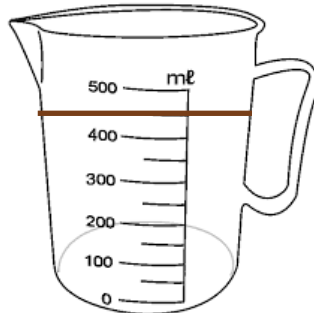


Please show 250 ml of hair remover.

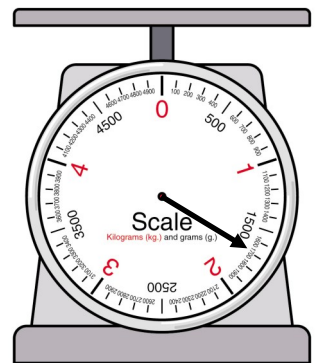
Circle the correct golden gloss hair shampoo.



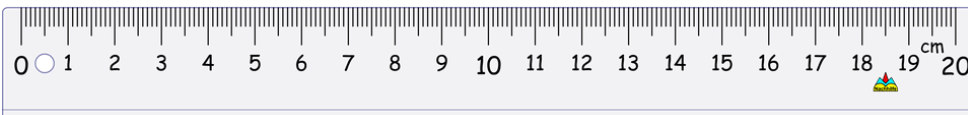
George needs 3100g of curry powder, please show this on the scale above.



How much brown paint does George use?



How heavy are the animal Pills that George uses?



George needs a worm 95mm long, can you show this on the ruler?



The final ingredient is toothpaste, would this be measured in?

- mm
- ml
- g



"He wasn't going to fool about wondering whether to put in a little bit of this or a little bit of that. Quite simply, he was going to put in EVERYTHING he could find."